

SONG—Sergeant & Chorus.

SERGEANT.

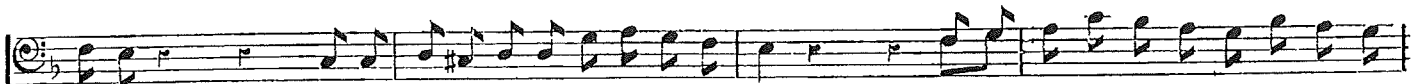


1. When a felon's not engaged in his em -
2. When the enter-prising burglar's not a -



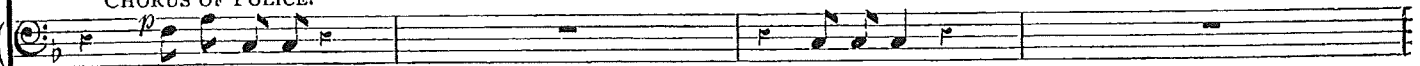
Allegro moderato.

PIANO.



- ployment, Or ma - tur - ing his fe - lo - nious lit - tle plans, His ca - pa - ci - ty for in - no - cent en -
- burg - ling, When the cut - throat is - n't oc - cu - pied in crime, He loves to hear the lit - tle brook a -

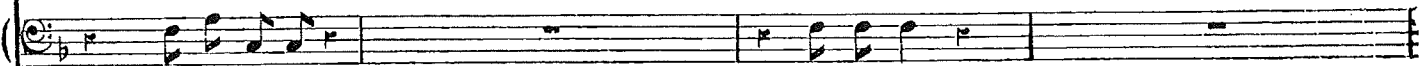
CHORUS OF POLICE.



his em - ployment, lit - tle plans,
not a - burg - ling, - pied in crime,



- joy - ment Is just as great as a - ny hon - est man's. Our feel - ings we with dif - fi - cul - ty
- gurg - ling, And lis - ten to the mer - ry vil - lage chime. When the cos - ter's fin - ished jump - ing on his



- cent en - joy - ment, hon - est man's.
brook a - gurg - ling, vil - lage chime.



smo-ther When con - sta - bu - la - ry du - ty's to be done. } Oh, take one con - sid - er - a - tion with an
 mo - ther, He loves to lie a - bask - ing in the sun. }

-cul - ty smo-ther, to be done. }
 on his mo - ther in the sun. }

- o - ther, A po - lice - man's lot is not a hap - py one; When con - sta - bu - la - ry du - ty's to be
 with an - o - ther! Ah, when con - sta - bu - la - ry du - ty's to be

done, to be done, The po - lice - man's lot is not a hap - py one, hap - py one!
 done, to be done, The po - lice - man's lot is not a hap - py one, hap - py one!